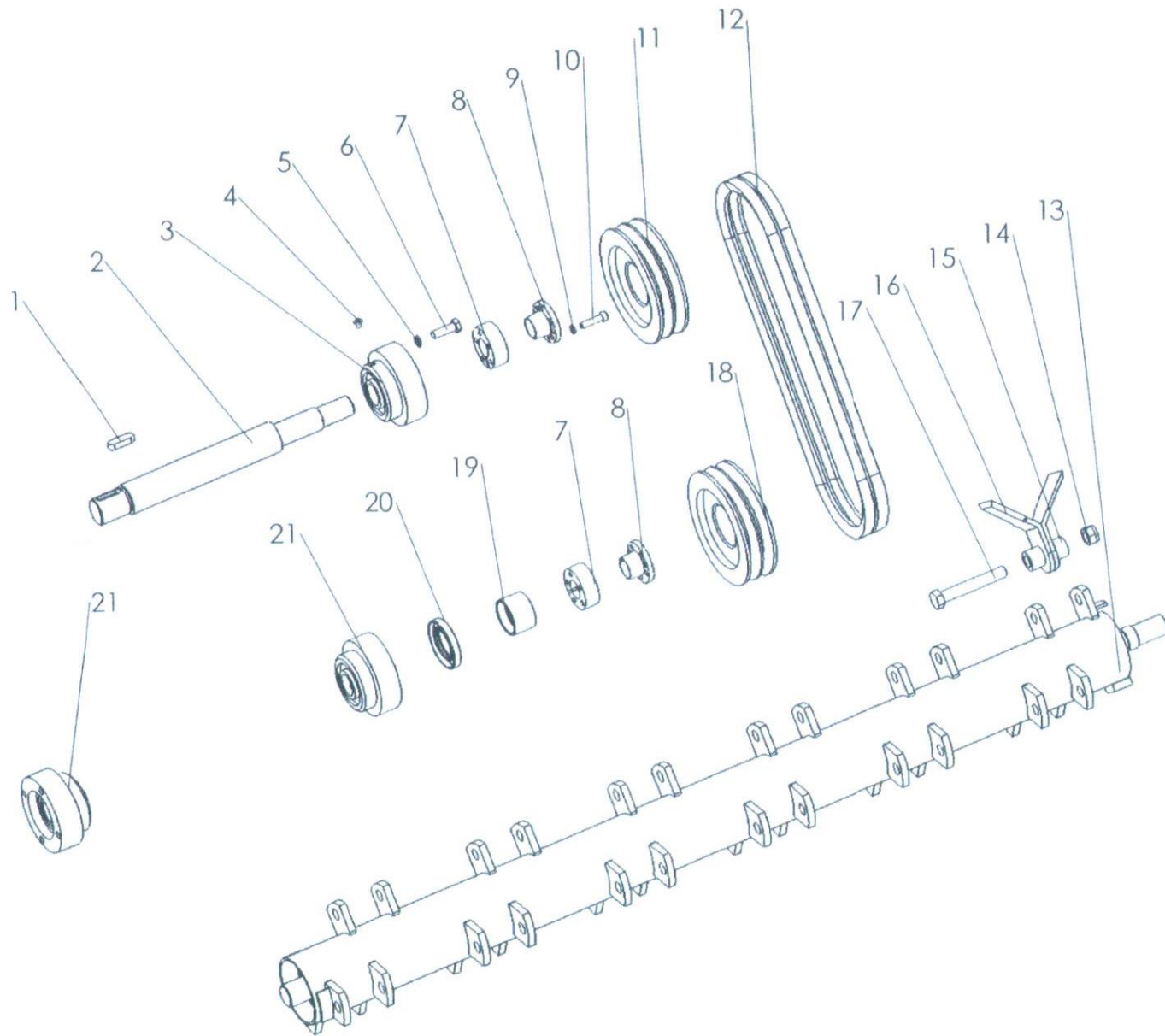


1. Flail Mower Assembly 割草机总成

| 序号 Ser.No | 代号 Part No | Name & Specification | 数量 Quantity | 备注 Remarks |
|-----------|---------------|----------------------|-------------|------------|
| 1 | EF 100.00.023 | Hanging Plate (left) | 1 | |
| 2 | EF100.00.024 | Mud shield | 1 | |
| 3 | EF 100.00.025 | roller | 1 | |
| | EF100.00.165 | Copper sheath | 2 | |
| 4 | GB 6184-86 | Lock nut M10 | 14 | |
| 5 | GB 97.1-85 | Plain washer 10 | 16 | |
| 6 | GB 5783-86 | Hex.head bolt M10×35 | 4 | |
| 7 | SL100A | Gearbox | 1 | |
| 8 | GB 5783-86 | Hex.head bolt M8×25 | 14 | |
| 9 | GB1096-79 | Key 10×45 | 1 | |
| 10 | GB 96-85 | Large washer 8 | 4 | |
| 11 | GB 6184-86 | Lock nut M8 | 8 | |
| 12 | EF100.00.112 | Guard shade | 1 | |
| 13 | GB 5783-86 | Hex.head bolt M10×70 | 1 | |
| 14 | EF100.00.108 | Guard cover | 1 | |
| 15 | EF100.00.015 | Gearbox seat | 1 | |
| 16 | GB 29.2-88 | Bolt M6x16 | 4 | |
| 17 | GB 97.1-85 | Plain washer 6 | 4 | |
| 18 | GB 93-87 | Spring lock washer 6 | 4 | |
| 19 | EF100.00.022 | Hanging plate(right) | 1 | |
| 20 | EF100.00.021 | Belt cover | 1 | |
| 21 | GB 96-85 | Large washer 10 | 1 | |
| 22 | GB 5780-86 | Hex.head bolt M10×80 | 1 | |
| 23 | 200.56.011 | Lock pin | 2 | |
| 24 | EF100.00.106 | spacer | 2 | |
| 25 | EF100.00.014 | pin | 2 | |

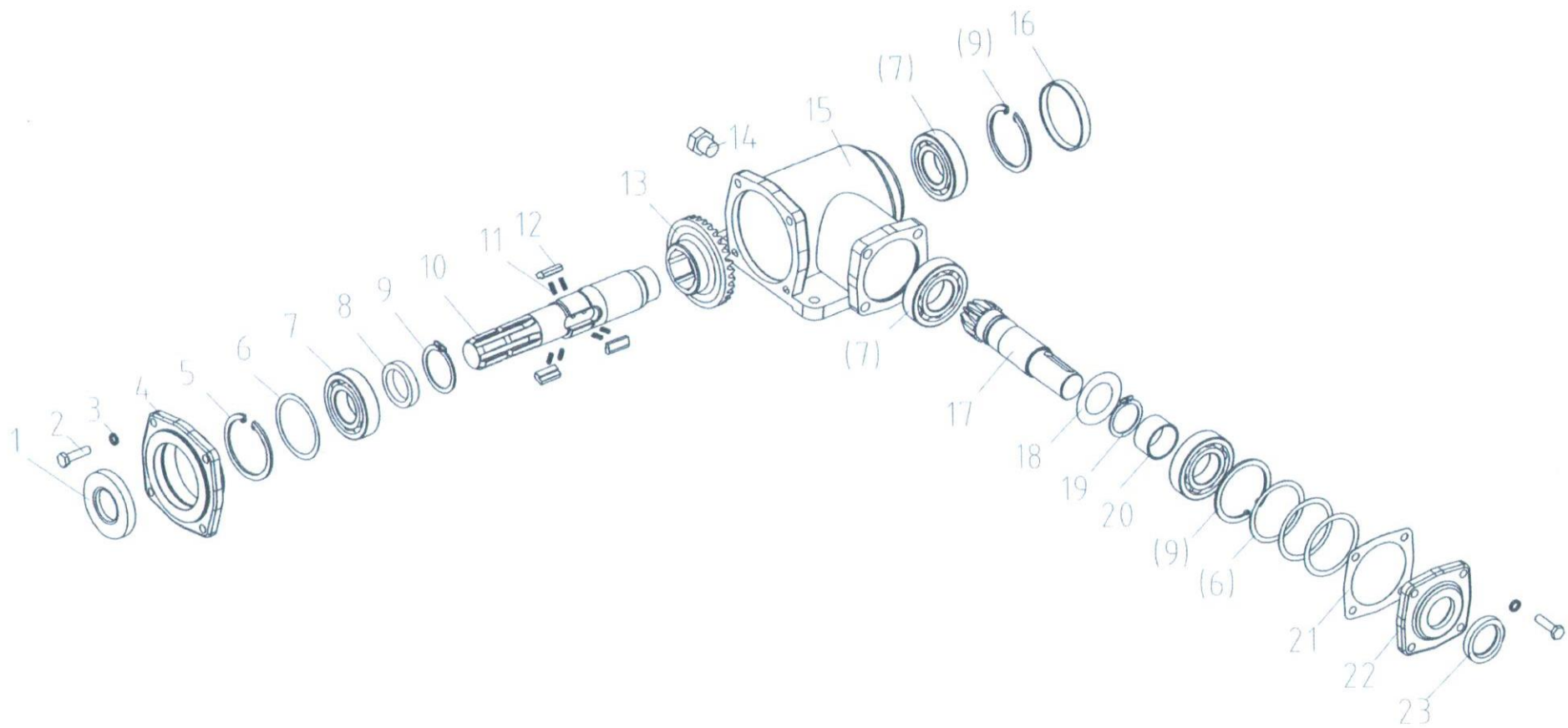
1. Flail Mower Assembly 割草机总成

| 续 表 | | | | |
|-----------|--------------|-------------------------|-------------|------------|
| 序号 Ser.No | 代号 Part No | Name & Specification | 数量 Quantity | 备注 Remarks |
| 26 | EF100.00.019 | Pin weldment | 1 | |
| 27 | EF100.00.020 | Suspension plate(right) | 1 | |
| 28 | EF100.00.018 | Bracket | 1 | |
| 29 | EF100.00.107 | Fixing plate | 1 | |
| 30 | GB 6184-86 | Lock nut M12 | 8 | |
| 31 | GB 97.1-85 | Plain washer 12 | 17 | |
| 32 | EF100.00.017 | Pothook | 1 | |
| 33 | GB 5783-86 | Hex. head bolt M12×35 | 1 | |
| 34 | EF100.00.105 | Pothook splint | 2 | |
| 35 | EF100.00.016 | Suspension plate(left) | 1 | |
| 36 | EF100.00.111 | Bent pin | 1 | |
| 37 | | R pin | 1 | |
| 38 | EF100.00.027 | Supporting frame | 1 | |
| 39 | EF100.00.117 | Cover | 1 | |
| 40 | EF100.00.123 | Pitman | 1 | |
| 41 | EF100.00.122 | Wide fender | 10 | |
| 42 | EF100.00.121 | Fender | 1 | |
| 43 | GB879-86 | Pin 4x20 | 2 | |
| 44 | EF100.00.013 | Blade axle cover | 1 | |
| 45 | GB 5783-86 | Hex. head bolt M12×30 | 7 | |
| 46 | GB 93-87 | Spring lock washer 8 | 14 | |
| 47 | GB 5783-86 | Hex. head bolt M8×20 | 6 | |



3. Blade Axle and Transmission Parts 刀轴及传动部分

| 序号 Ser.No | 代号 Part No | Name & Specification | 数量 Quantity | 备注 Remarks |
|-----------|--------------|------------------------|-------------|------------|
| 1 | GB1096-79 | Key 10×30 | 1 | |
| 2 | EF100.00.113 | Transmission shaft | 1 | |
| 3 | EF100.00.030 | Bearing UC205 | 1 | |
| 4 | GB1152-89 | Grease nipple M6 | 1 | |
| 5 | GB 93-87 | Spring lock washer 8 | 14 | |
| 6 | GB 5783-86 | Hex. head bolt M8×25 | 14 | |
| 7 | EF100.00.114 | Inner swellable sleeve | 2 | |
| 8 | EF100.00.115 | Outer swellable sleeve | 2 | |
| 9 | GB 93-87 | Spring lock washer 6 | 6 | |
| 10 | GB 70-85 | Hex. head bolt M6×25 | 6 | |
| 11 | EF100.00.116 | Belt wheel (large) | 1 | |
| 12 | GB 1171-74 | Belt A930 | 2 | 17X930Li |
| 13 | EF100.00.011 | Blade axle | 1 | |
| 14 | GB 6184-86 | Lock nut M12 | 18 | |
| 15 | EF100.00.101 | Spacer | 36 | |
| 16 | EF100.00.102 | Blade | 36 | |
| 17 | GB 5782-86 | Hex. head bolt M12×80 | 18 | |
| 18 | EF100.00.110 | Belt wheel (little) | 1 | |
| 19 | EF100.00.109 | Sleeve | 1 | |
| 20 | GB 13871 | Oil seal 40x55x8 | 1 | |
| 21 | EF100.00.012 | Bearing UC205 | 2 | |



| GEAR BOX | | | | |
|----------|----------------|-----------------------|-------------|-----------|
| 序号 NO. | 零件代号 Part NO. | Name & Specifications | 数量 Quantity | 备注 Remark |
| 1 | 8.7.1.00152 | Oil seal | 1 | |
| 2 | BAA00069 | Bolt | 8 | |
| 3 | BCB00068 | Spring washer | 8 | |
| 4 | SL100.7 | Rear cover(large) | 1 | |
| 5 | 8.5.2.00131 | Circlip | 3 | |
| 6 | 0.248.7502.00 | Adjusting washer | optional | |
| | 0.248.7503.00 | | | |
| | 0.248.7505.00 | | | |
| | 0.248.7510.00 | | | |
| 7 | BZA00174 | Bearing | 4 | |
| 8 | SL100.24 | Sleeve | 1 | |
| 9 | 8.5.1.00712 | Circlip | 1 | |
| 10 | SL100.1A | Input shaft | 1 | |
| 11 | 19.M.SP.RVRL | Spring | 6 | |
| 12 | SL100.11A | Key | 3 | |
| 13 | SL100.12A | Angle gear | 1 | |
| 14 | 0.107.7100.01 | Relief bolt | 1 | |
| 15 | SL100.15 | Deck | 1 | |
| 16 | 8.7.0.00744 | Block cover | 1 | |
| 17 | SL100.22 | Gear shaft | 1 | |
| 18 | 0.259.7502.00 | Adjusting washer | optional | |
| | 0.259.7503.00 | | | |
| | 0.259.7505.00 | | | |
| | 0.259.7510.00 | | | |
| 19 | 8.5.1.00583.00 | Circlip | 1 | |
| 20 | SL100.18 | Sleeve | 1 | |
| 21 | SL100.19 | Paper washer(small) | 1 | |
| 22 | SL100.20 | Rear cover(small) | 1 | |
| 23 | 8.7.1.01319 | Oil seal | 1 | |